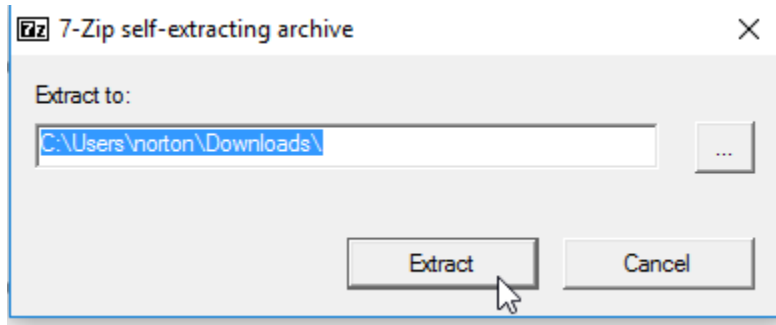


## CNS Lobby B&W Printer – Windows

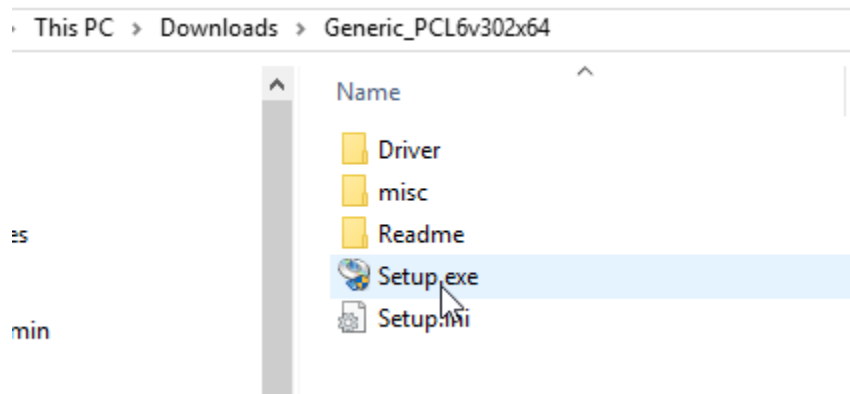
Download the installer from <https://ucdavis.box.com/s/c4vkqv5a90l3c6izvqu5gntqyf8qedpl>

Alternatively, the driver can be downloaded from [http://downloads.canon.com/bisg2015/drivers/win64/Generic\\_PCL6v302x64.exe](http://downloads.canon.com/bisg2015/drivers/win64/Generic_PCL6v302x64.exe)

Extract the installer

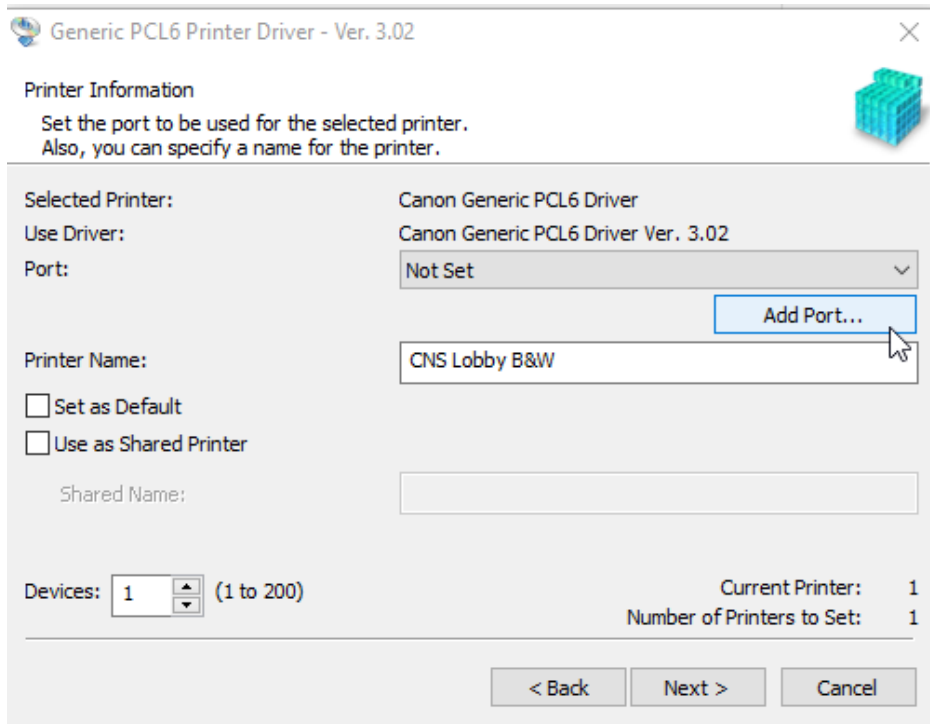


Run the Setup.exe and click yes if you get a UAC Prompt

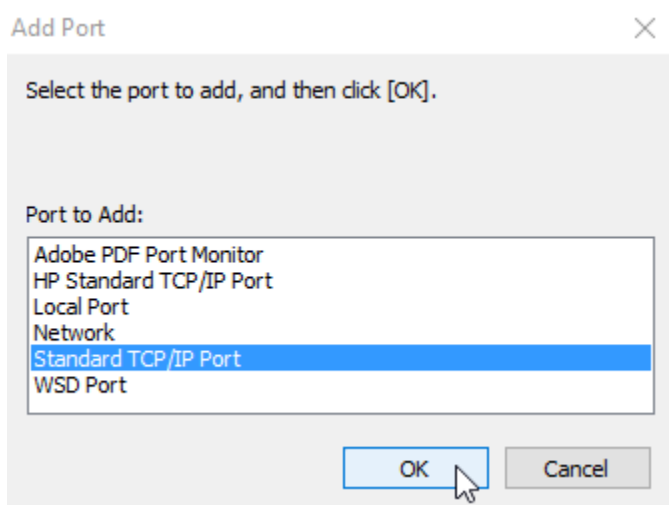


Click Next or Yes until you reach the printer configuration screen

Change Printer name to CNS Lobby B&W and Click Add Port



Select Standard TCP/IP Port



Click Next then enter the printer IP 128.120.140.141 and press next again

## Add Standard TCP/IP Printer Port Wizard

### Add port

For which device do you want to add a port?



Enter the Printer Name or IP address, and a port name for the desired device.

Printer Name or IP Address:

Port Name:

< Back   Next >   Cancel

Click Finish and you should be brought back to the Printer Driver configuration screen. Click Next

Generic PCL6 Printer Driver - Ver. 3.02



### Printer Information

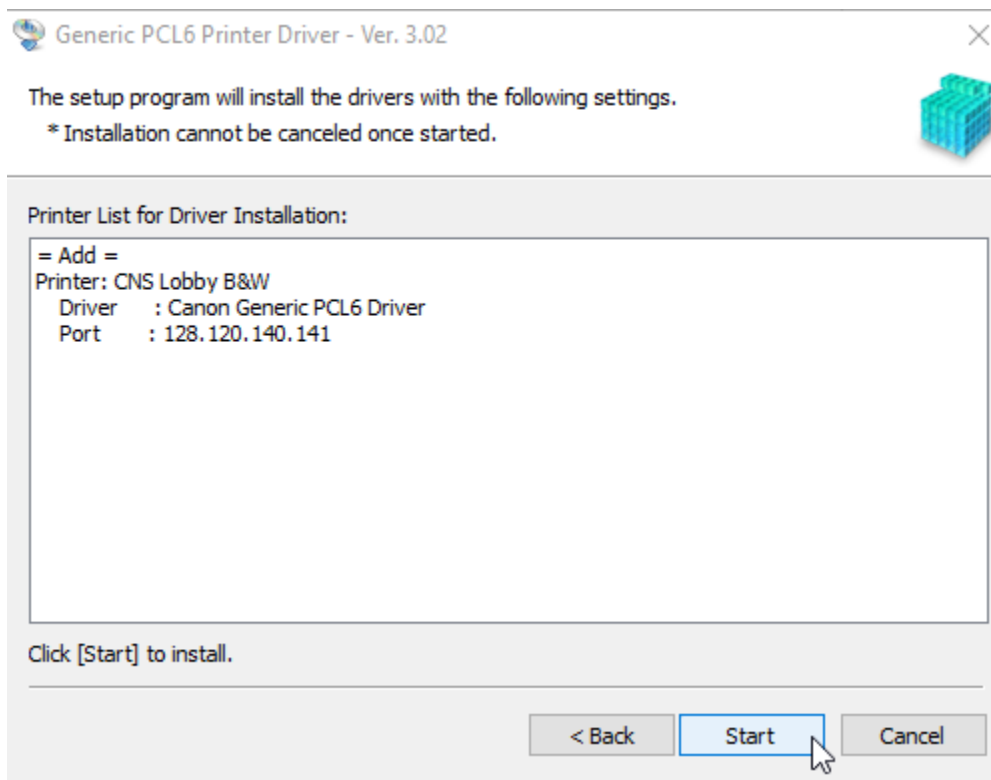
Set the port to be used for the selected printer.  
Also, you can specify a name for the printer.



Selected Printer: Canon Generic PCL6 Driver  
Use Driver: Canon Generic PCL6 Driver Ver. 3.02  
Port:    
Printer Name:   
 Set as Default  
 Use as Shared Printer  
Shared Name:   
Devices:  (1 to 200)      Current Printer: 1  
Number of Printers to Set: 1

< Back   Next >   Cancel

## Click Start



## Click Exit

